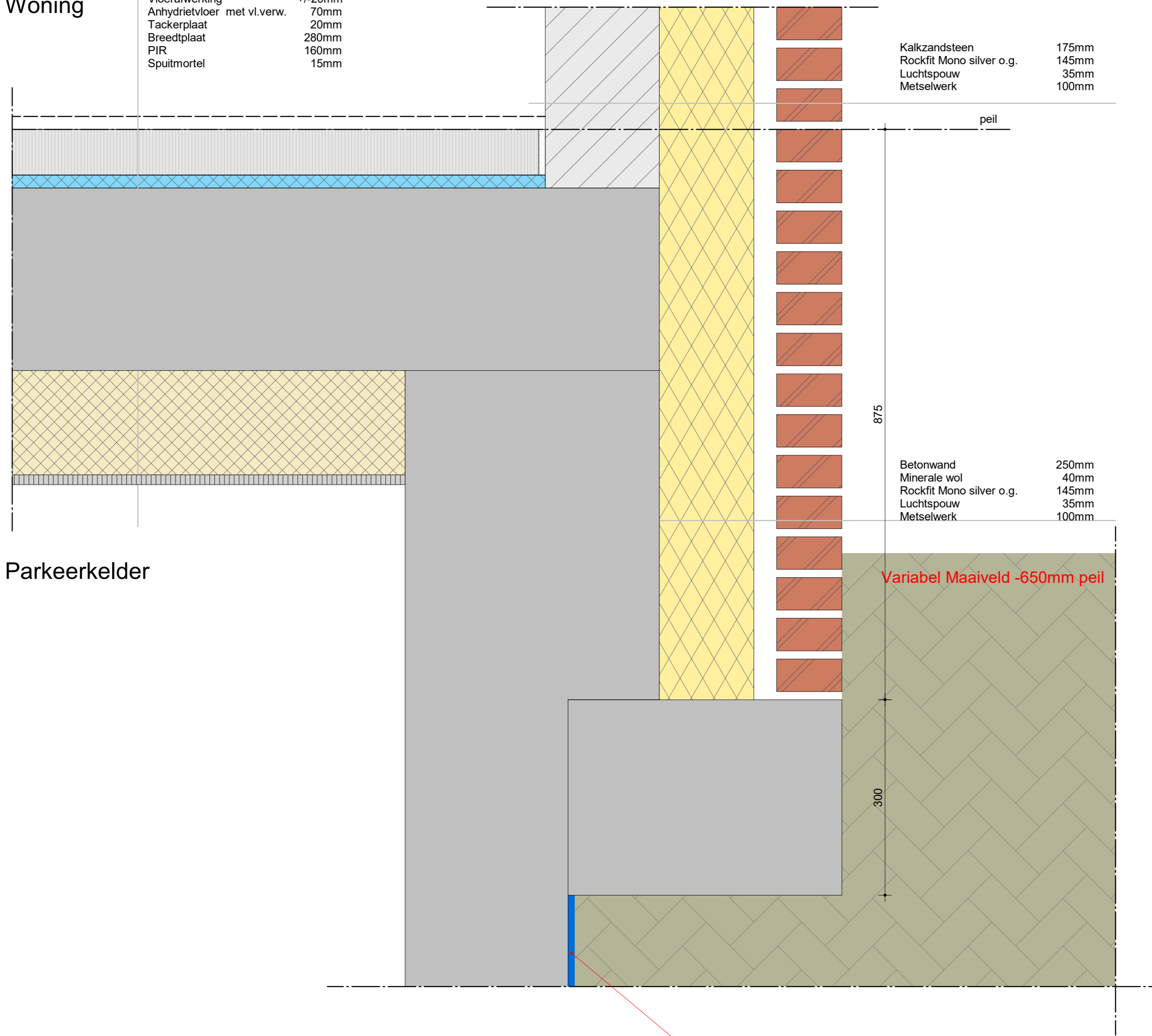


Woning

Vloerafwerking +/-20mm
Anhydrietvloer met vl.verw. 70mm
Tackerplaat 20mm
Breedtplaat 280mm
PIR 160mm
Spuitmortel 15mm



Kalkzandsteen 175mm
Rockfit Mono silver o.g. 145mm
Luchtspouw 35mm
Metselwerk 100mm

peil

875

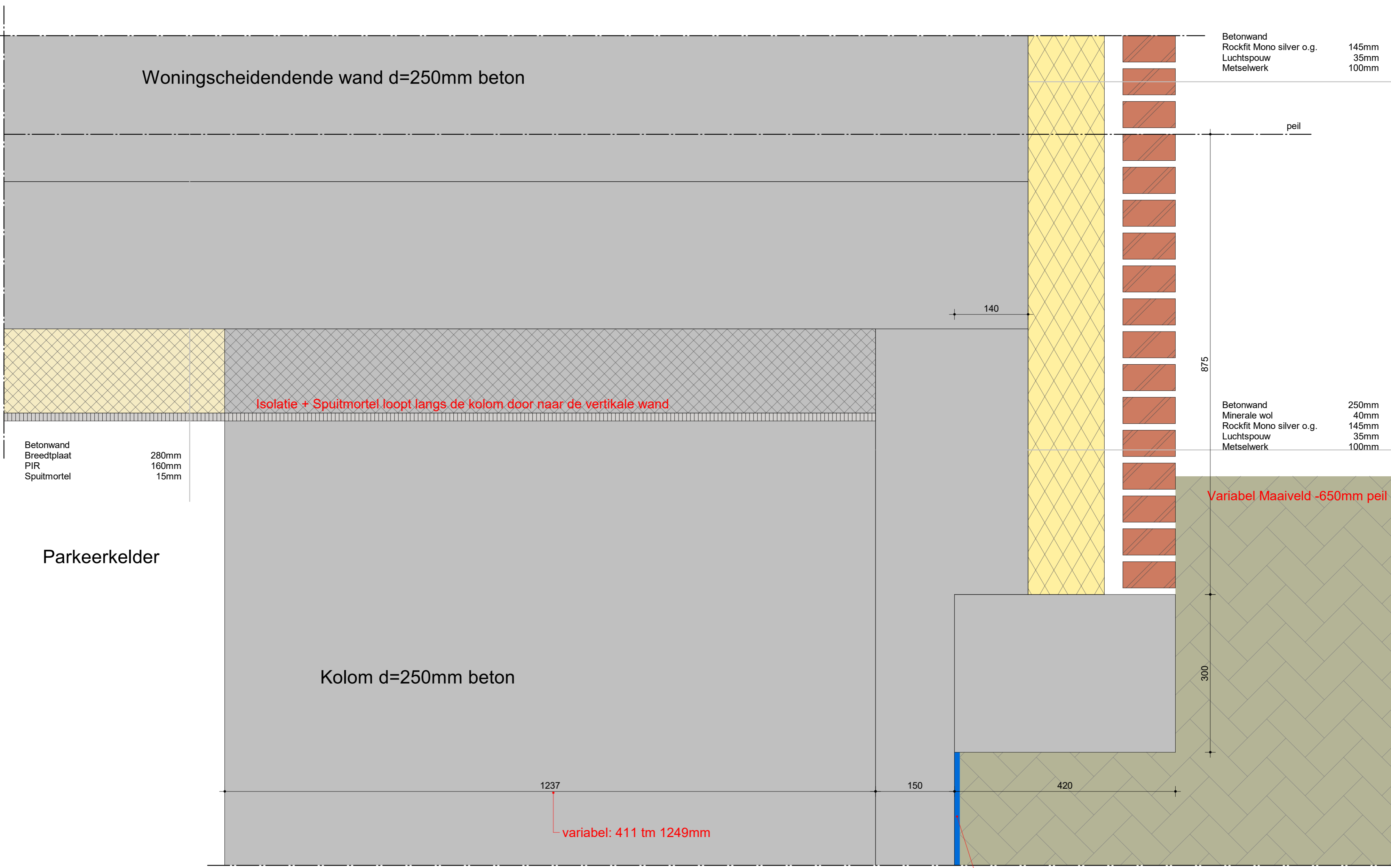
Betonwand 250mm
Minerale wol 40mm
Rockfit Mono silver o.g. 145mm
Luchtspouw 35mm
Metselwerk 100mm

300

Variabel Maaiveld -650mm peil

Damwand

Parkeerkelder



Woningscheidende wand d=250mm beton

Betonwand 145mm
 Rockfit Mono silver o.g. 35mm
 Luchtspouw 100mm
 Metselwerk

peil

140

875

Isolatie + Sputmortel loopt langs de kolom door naar de verticale wand

Betonwand 280mm
 Breedplaat 160mm
 PIR 15mm
 Sputmortel

Betonwand 250mm
 Minerale wol 40mm
 Rockfit Mono silver o.g. 145mm
 Luchtspouw 35mm
 Metselwerk 100mm

Variabel Maaiveld -650mm peil

Parkeerkelder

Kolom d=250mm beton

300

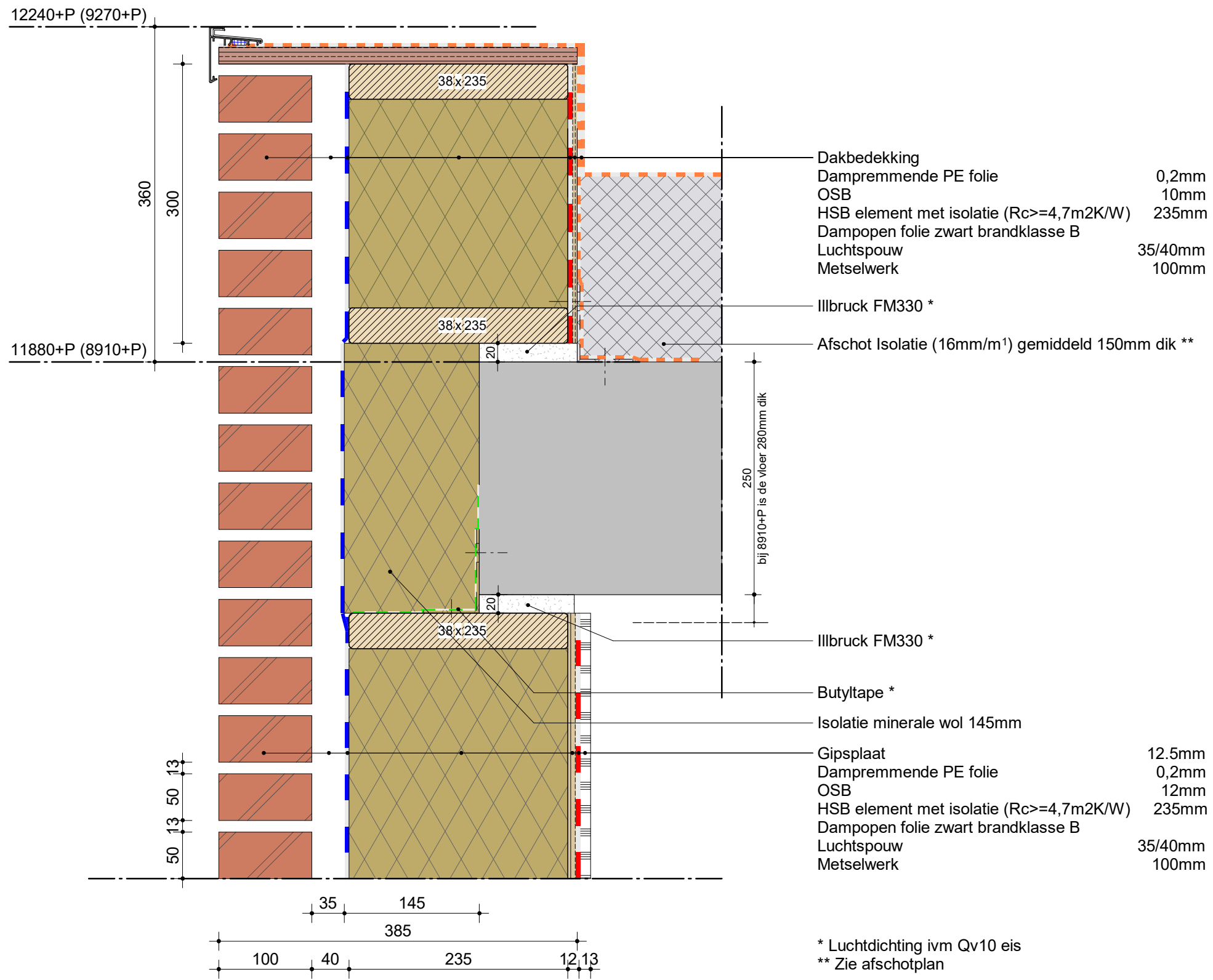
1237

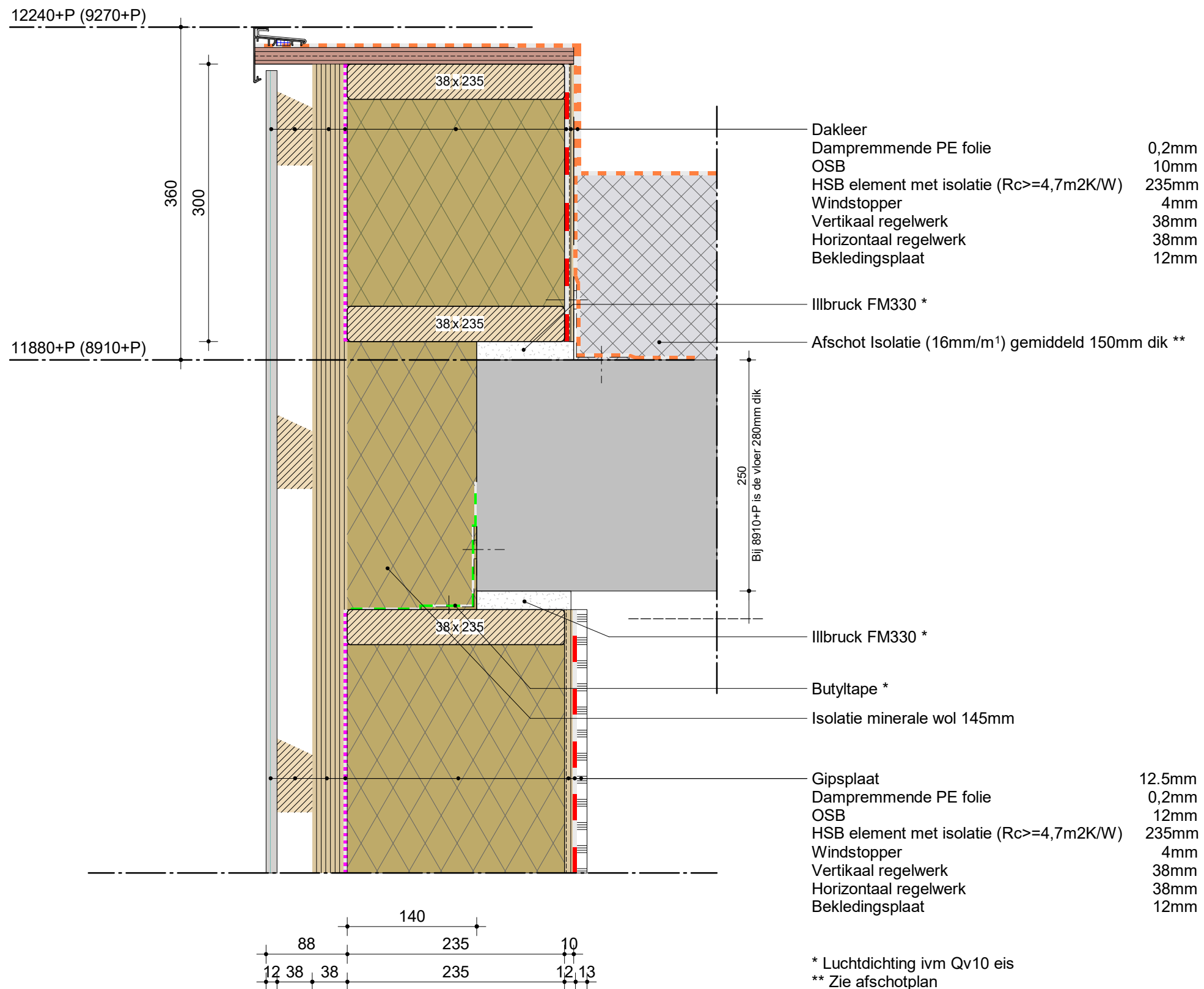
variabel: 411 tm 1249mm

150

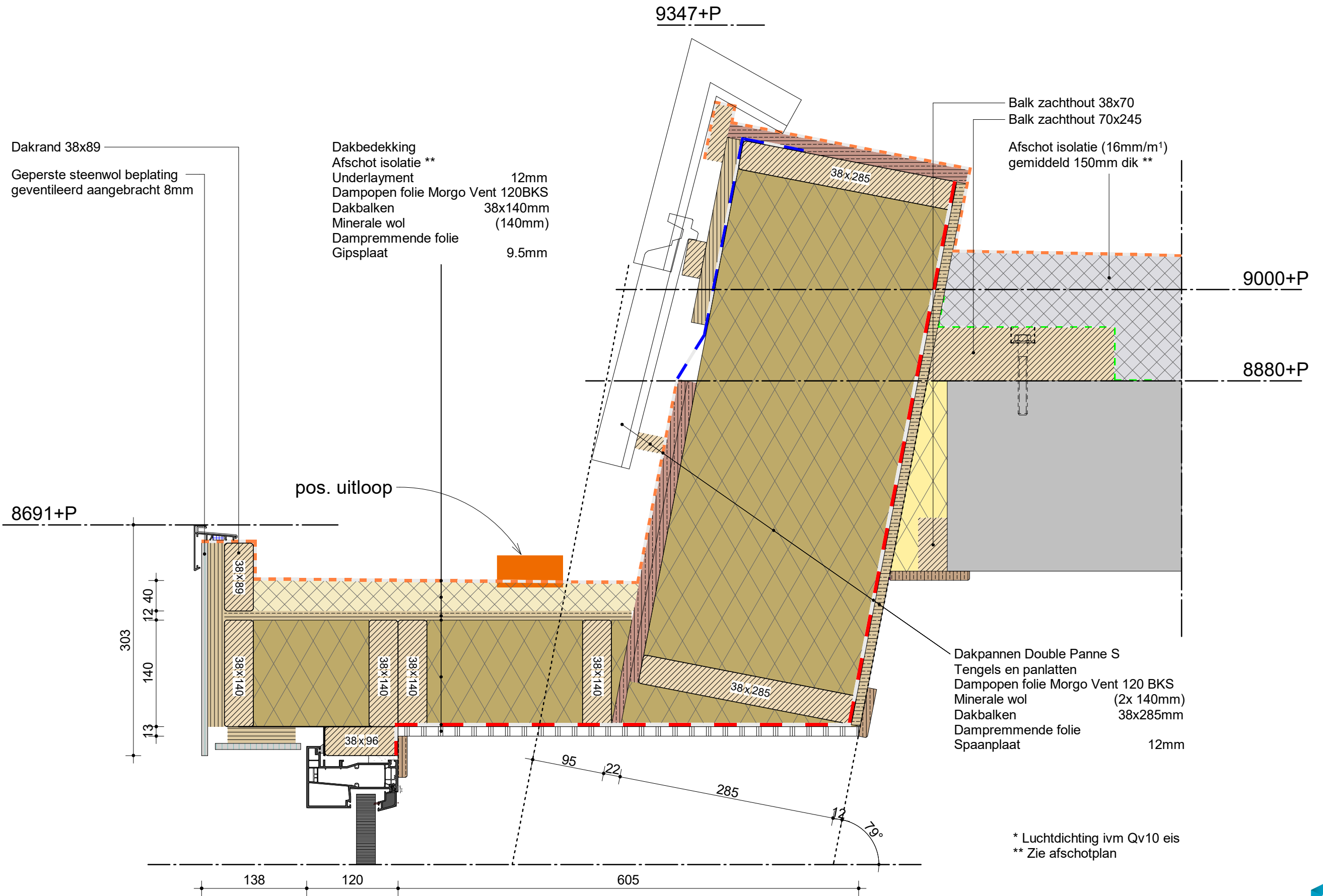
420

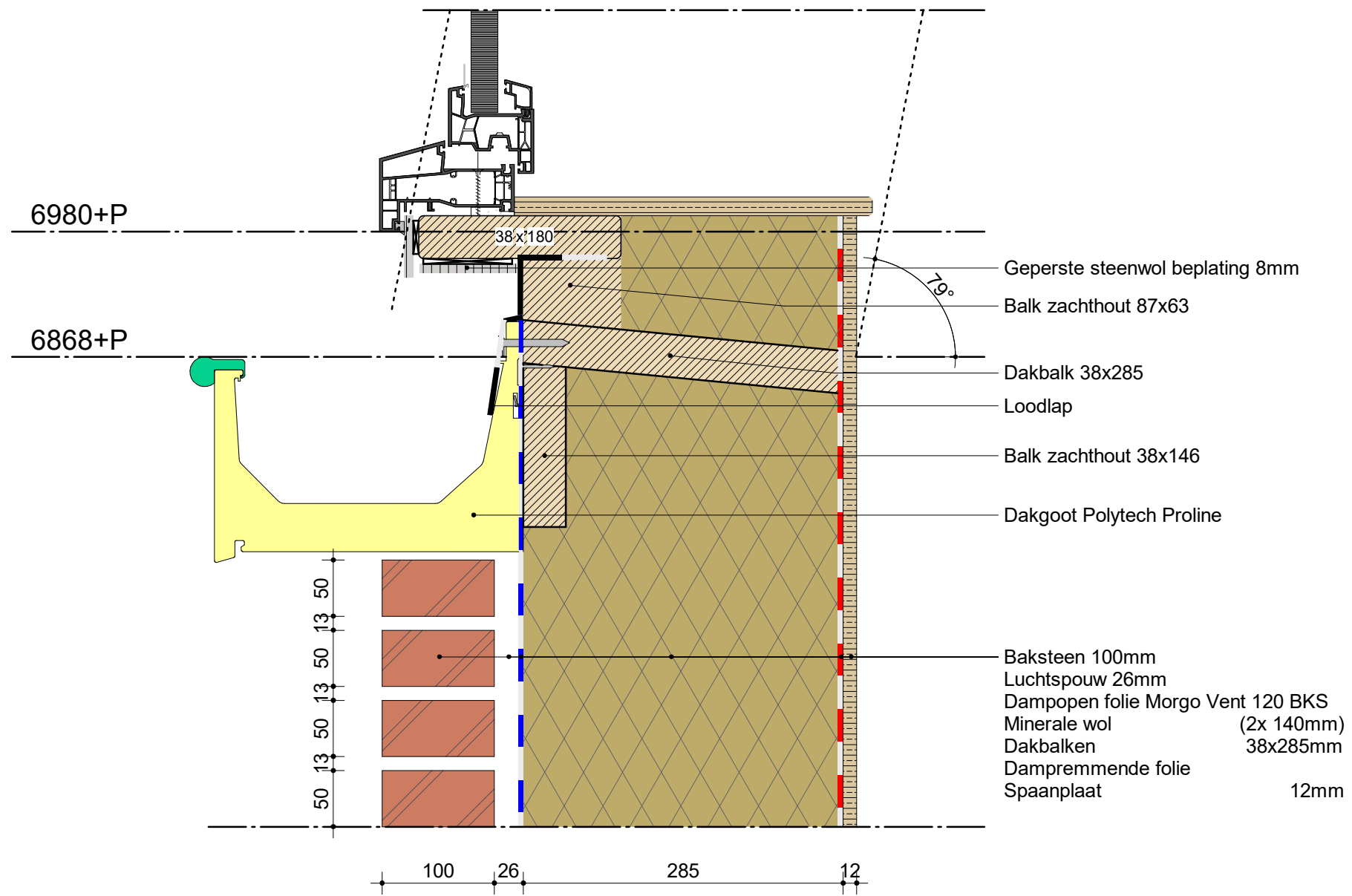
Damwand





* Luchtdichting ivm Qv10 eis
 ** Zie afschotplan



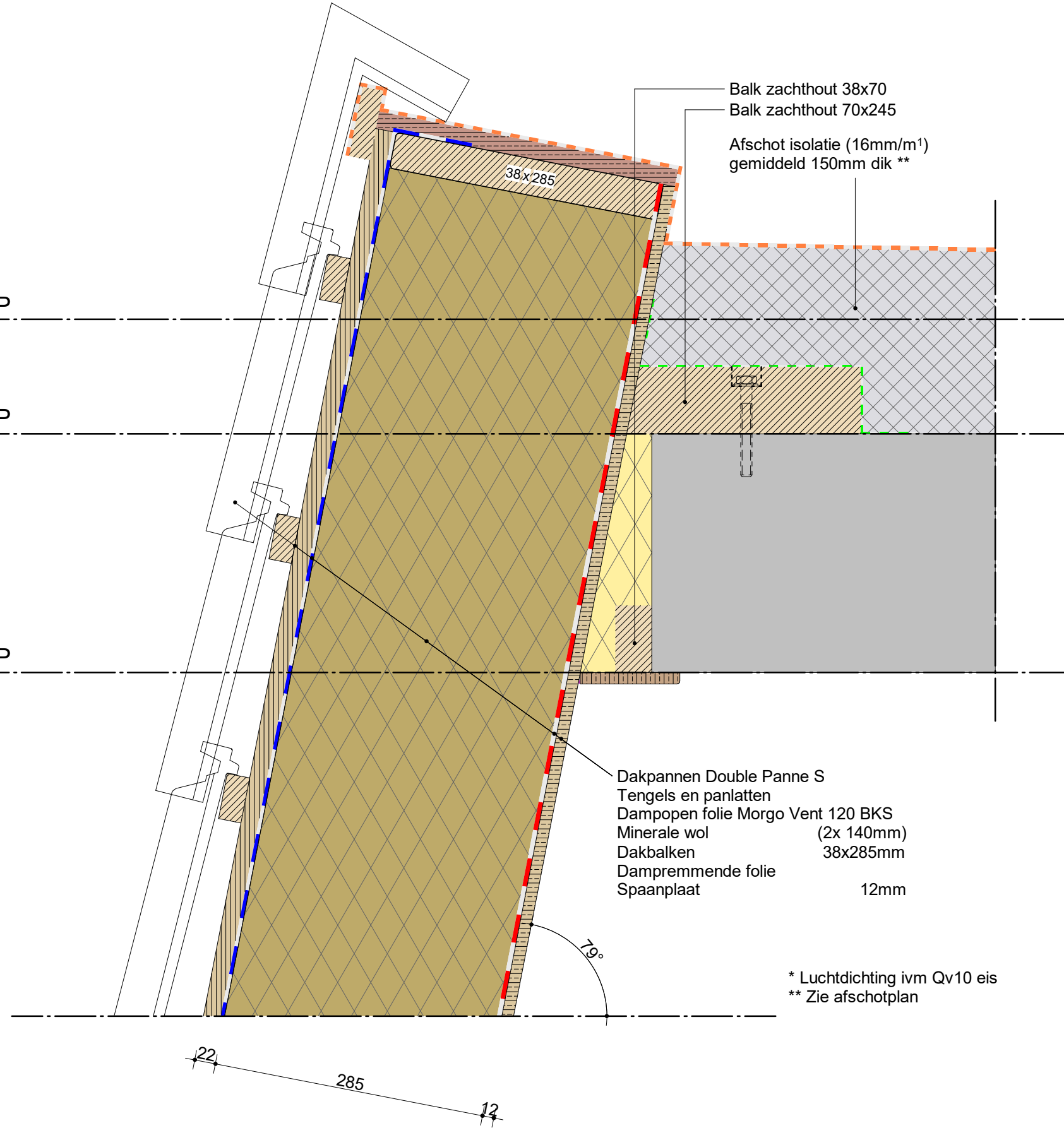


9347+P

9000+P

8880+P

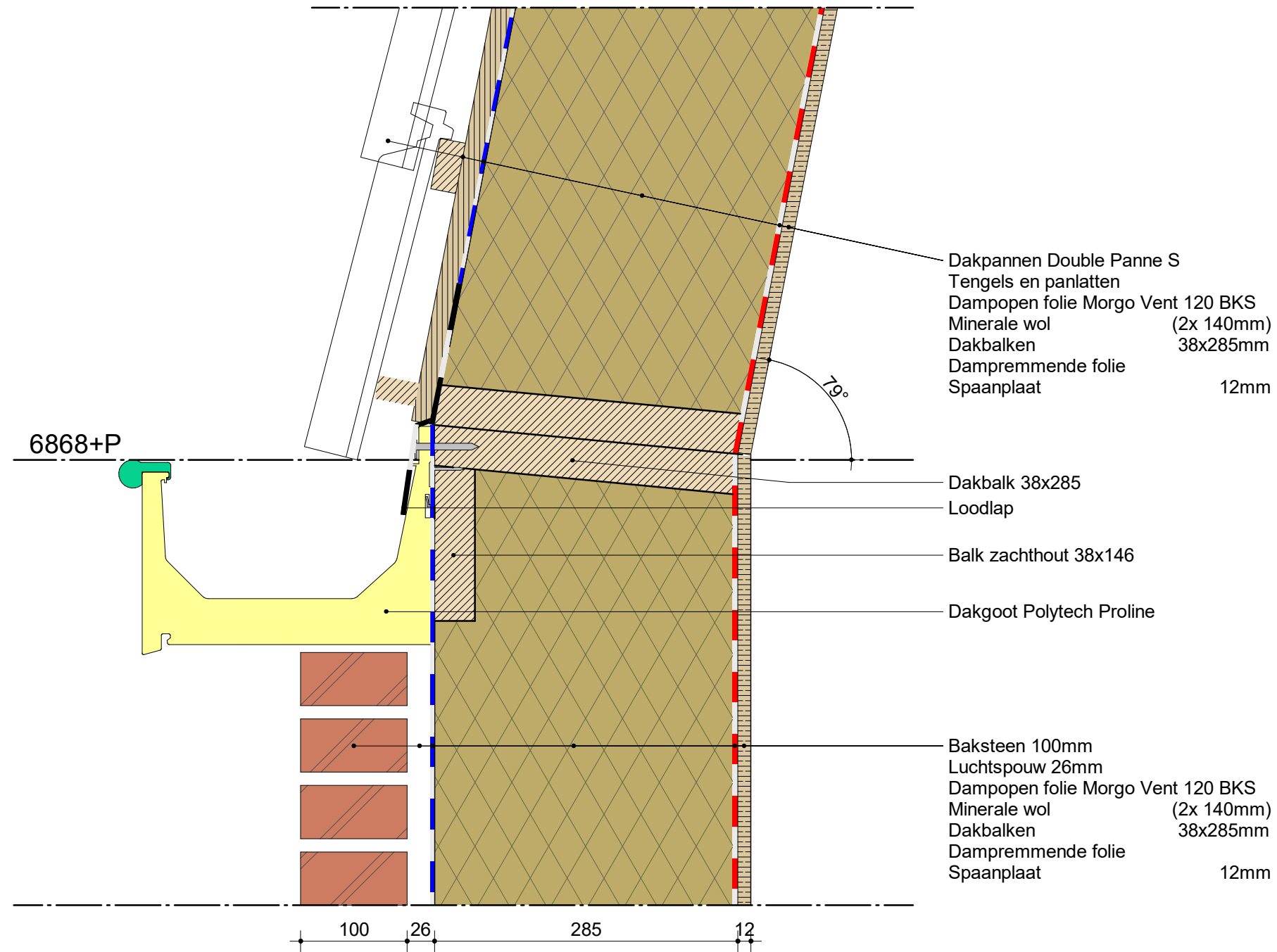
8630+P

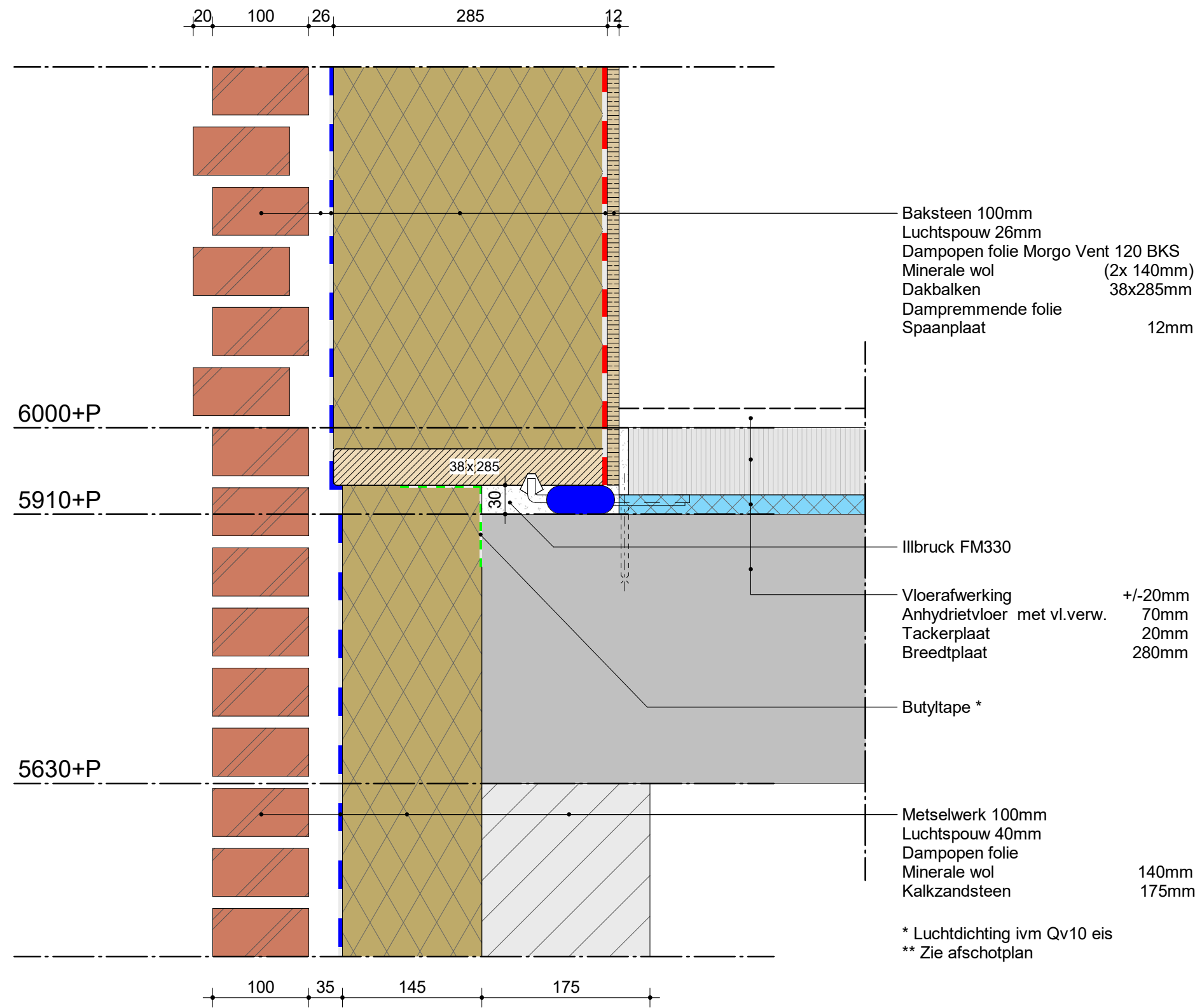


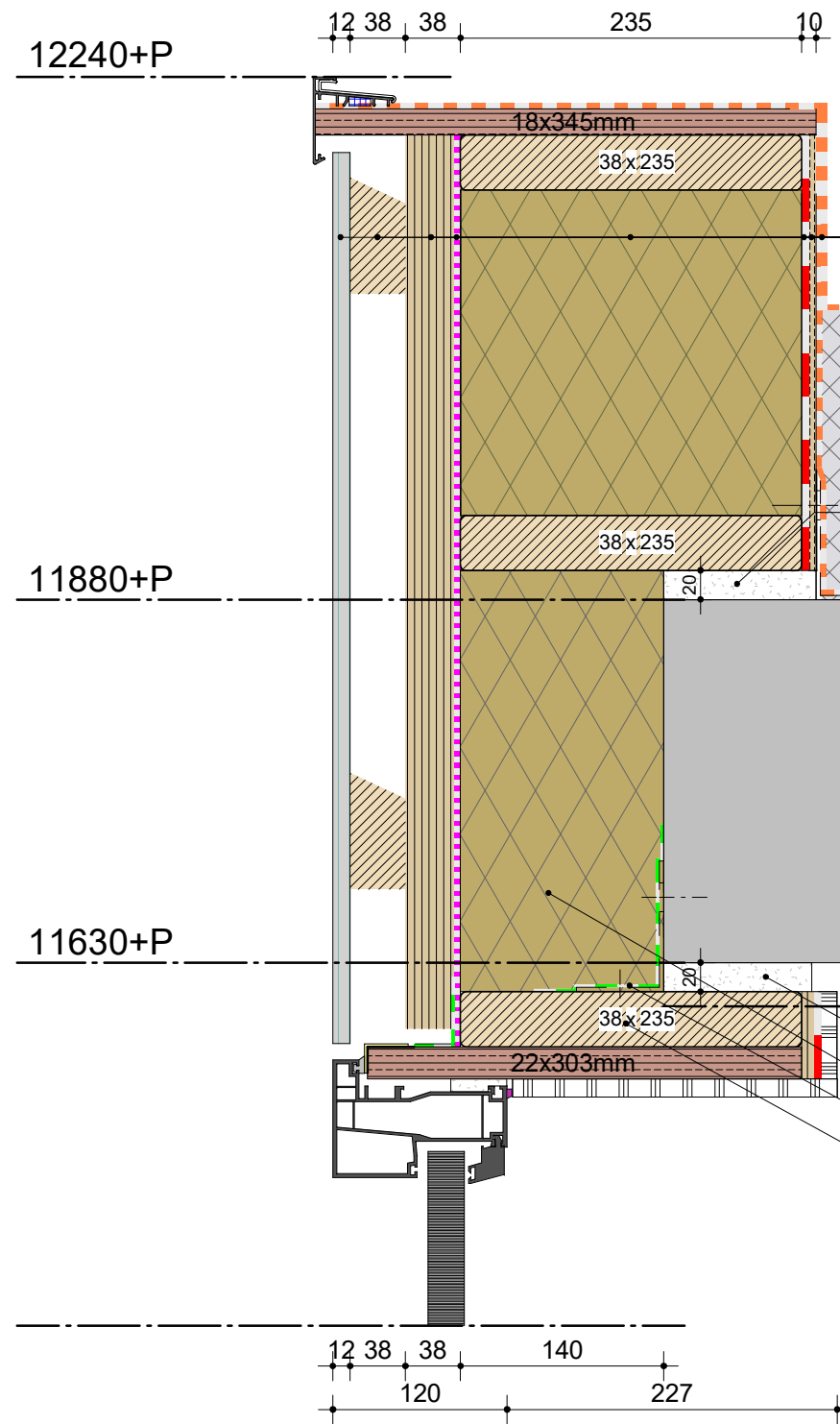
Drawn by EPLdK
Date 12-07-2024

Dak C 01

PE23027 - Pastoriestraete Bodegraven





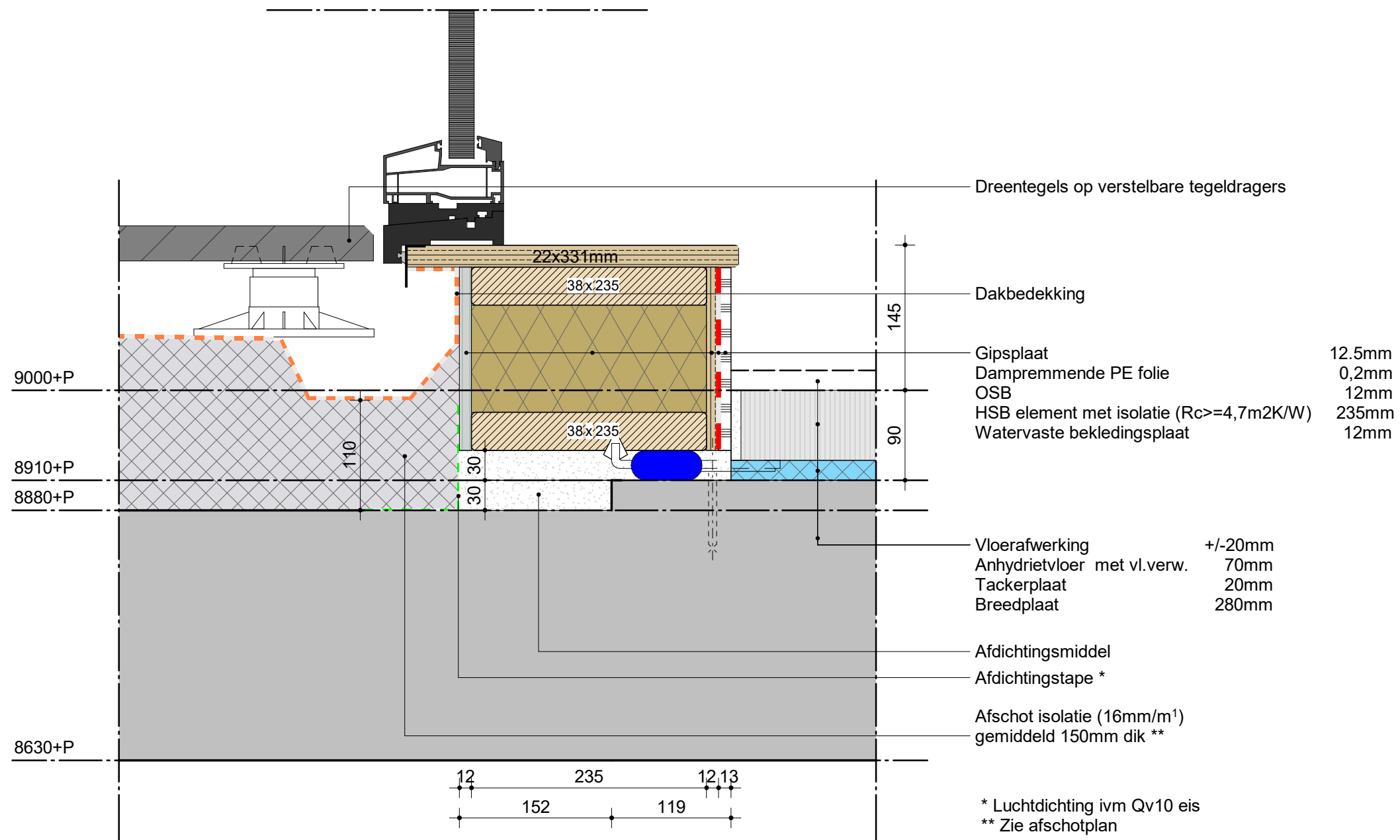


- Dakleer
- Dampremmende PE folie 0,2mm
- OSB 10mm
- HSB element met isolatie ($R_c \geq 4,7 \text{ m}^2\text{K/W}$) 235mm
- Windstopper 4mm
- Vertikaal regelwerk 38mm
- Horizontaal regelwerk 38mm
- Bekledingsplaat 12mm

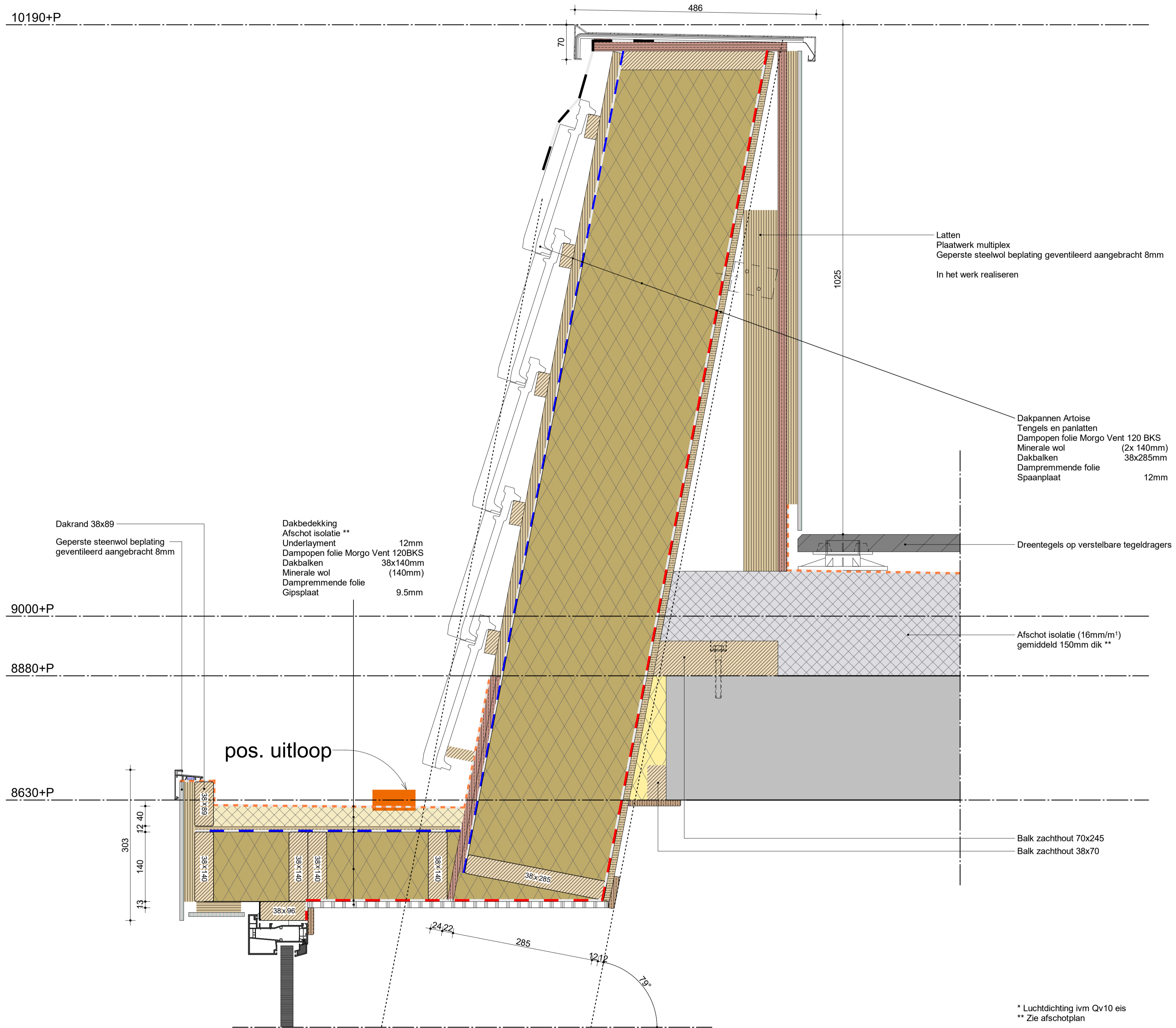
- Illbruck FM330 *
- Afschot Isolatie (16 mm/m^1) gemiddeld 150mm dik **

- Illbruck FM330 *
- Isolatie minerale wol 145mm
- Butyltape *
- Bovenstijl HSB doorzetten

* Luchtdichting ivm Qv10 eis
 ** Zie afschotplan



10190+P



Latten
 Plaatwerk multiplex
 Geperste steenwol beplating geventileerd aangebracht 8mm
 In het werk realiseren

Dakpannen Artoise
 Tengels en panlatten
 Dampopen folie Morgo Vent 120 BKS
 Minerale wol (2x 140mm)
 Dakbalken 38x285mm
 Dampremmende folie
 Spaanplaat 12mm

Dakrand 38x89
 Geperste steenwol beplating
 geventileerd aangebracht 8mm

Dakbedekking
 Afschot isolatie **
 Underlayment 12mm
 Dampopen folie Morgo Vent 120BKS
 Dakbalken 38x140mm
 Minerale wol (140mm)
 Dampremmende folie
 Gipsplaat 9.5mm

9000+P

8880+P

8630+P

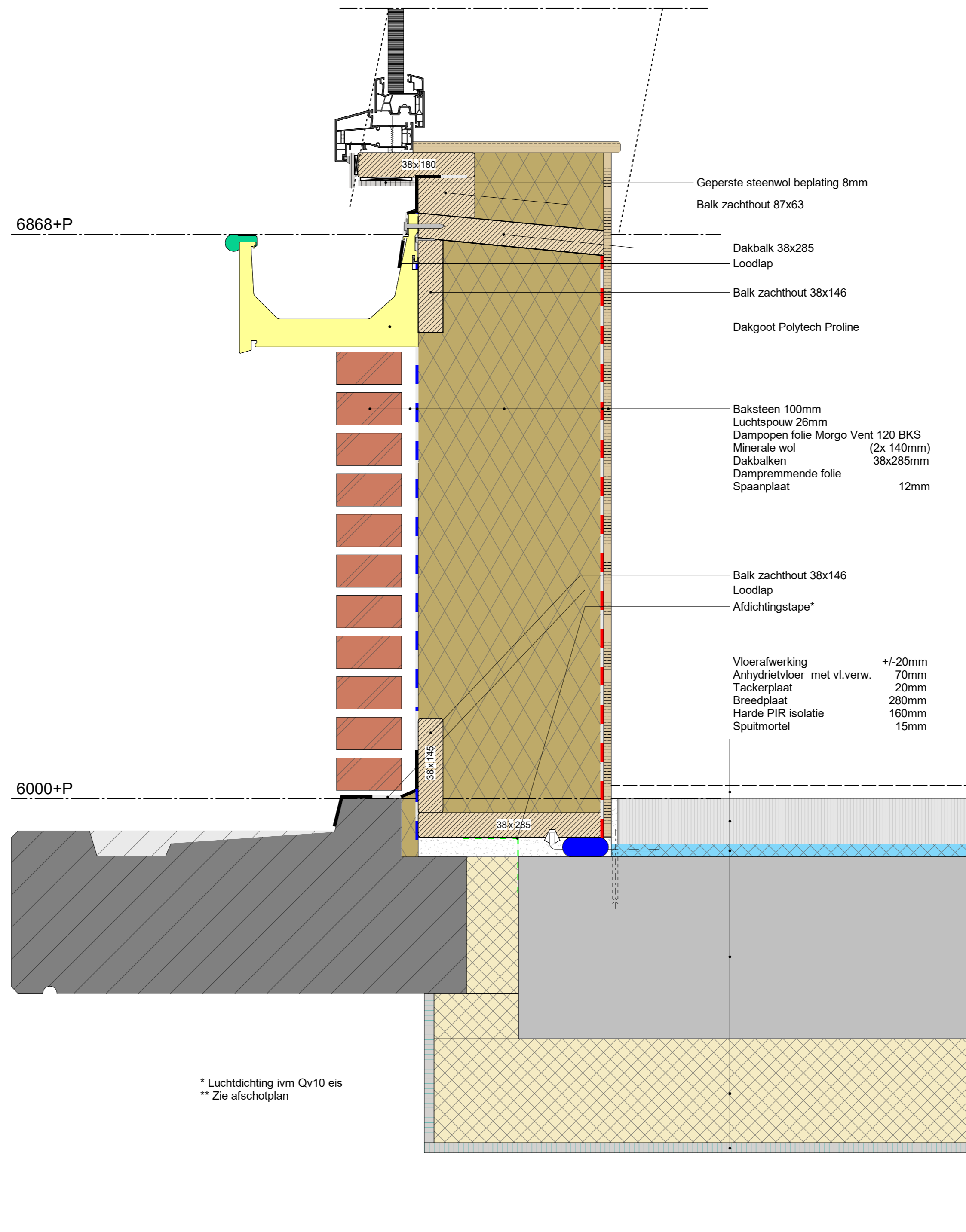
pos. uitloop

Dreentegels op verstelbare tegeldragers

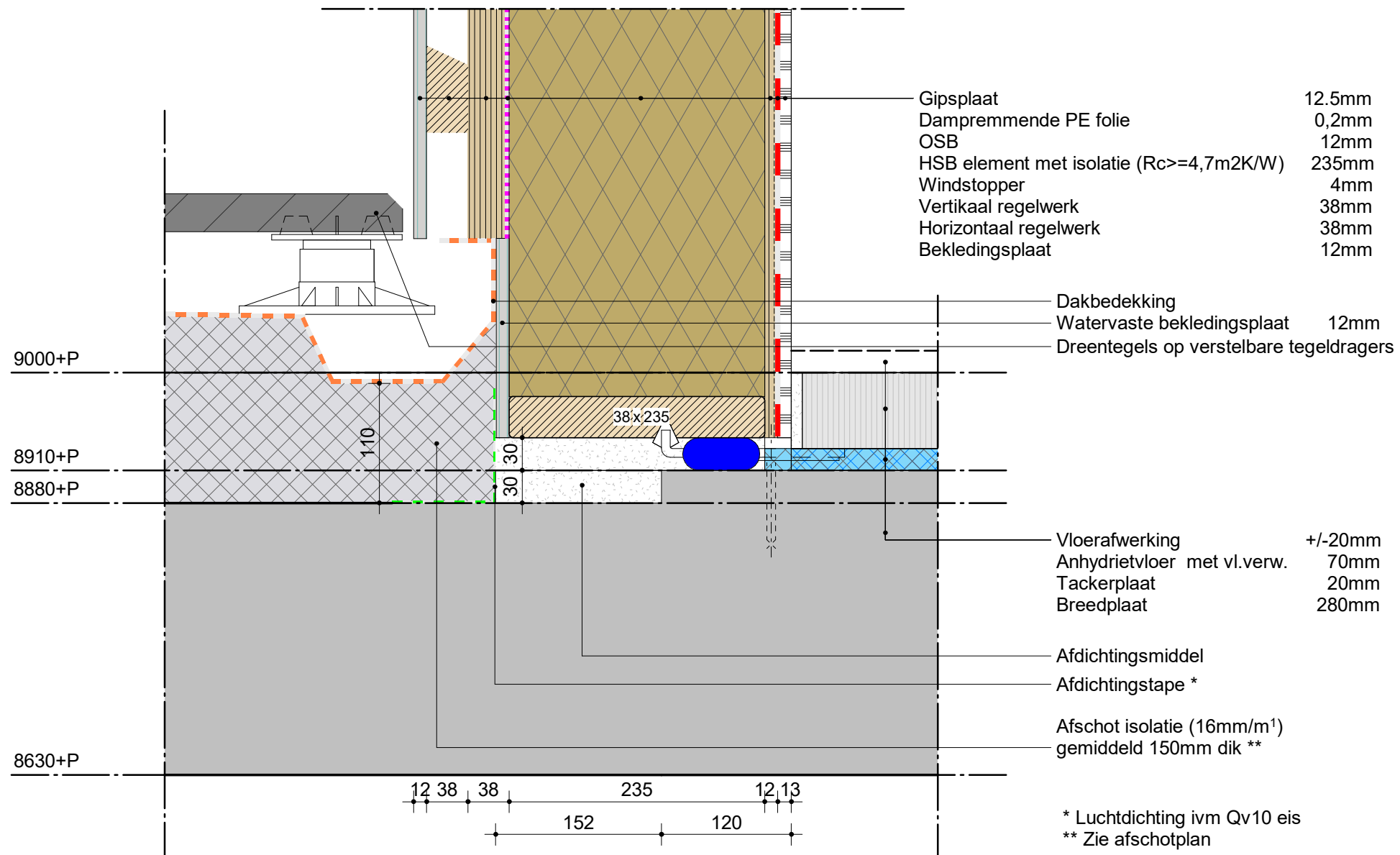
Afschot isolatie (16mm/m²)
gemiddeld 150mm dik **

Balk zacht hout 70x245
Balk zacht hout 38x70

* Lucht dichting i/vm Qv10 eis
** Zie afschotplan

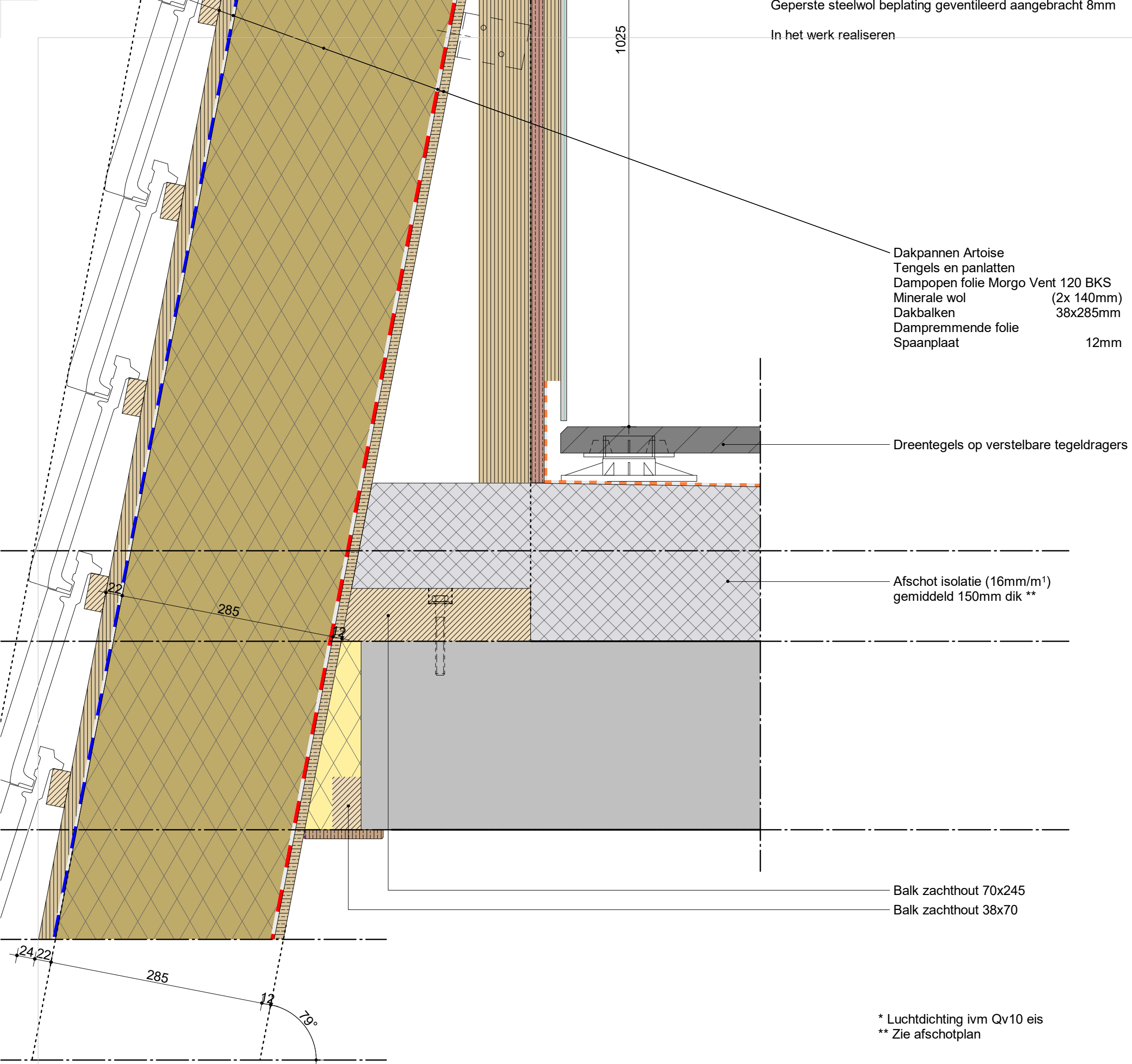


* Luchtdichting ivm Qv10 eis
** Zie afschotplan



Geperste steelwol beplating geventileerd aangebracht 8mm

In het werk realiseren



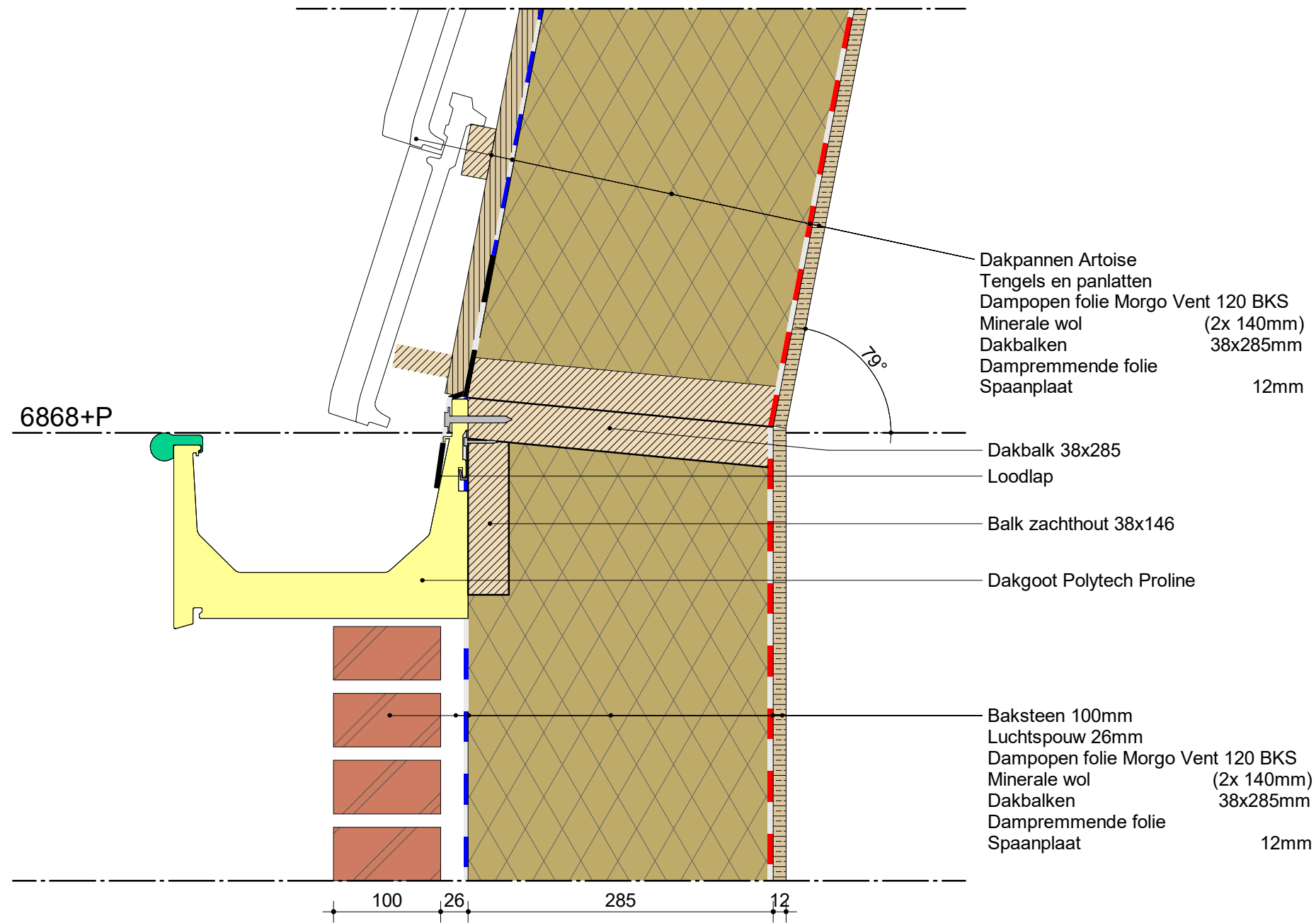
- Dakpannen Artoise
- Tengels en panlatten
- Dampopen folie Morgo Vent 120 BKS
- Minerale wol (2x 140mm)
- Dakbalken 38x285mm
- Dampremmende folie 12mm
- Spaanplaat

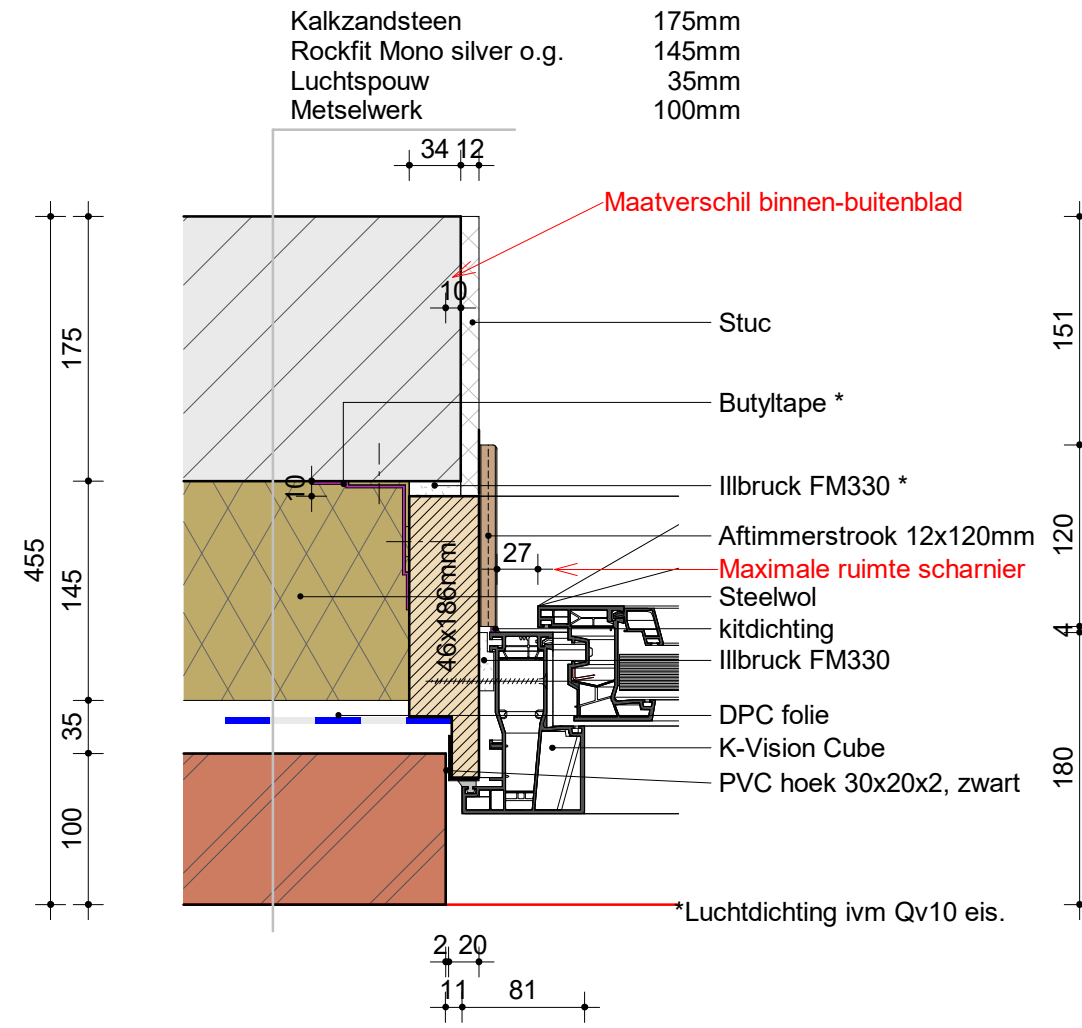
Dreentegels op verstelbare tegel dragers

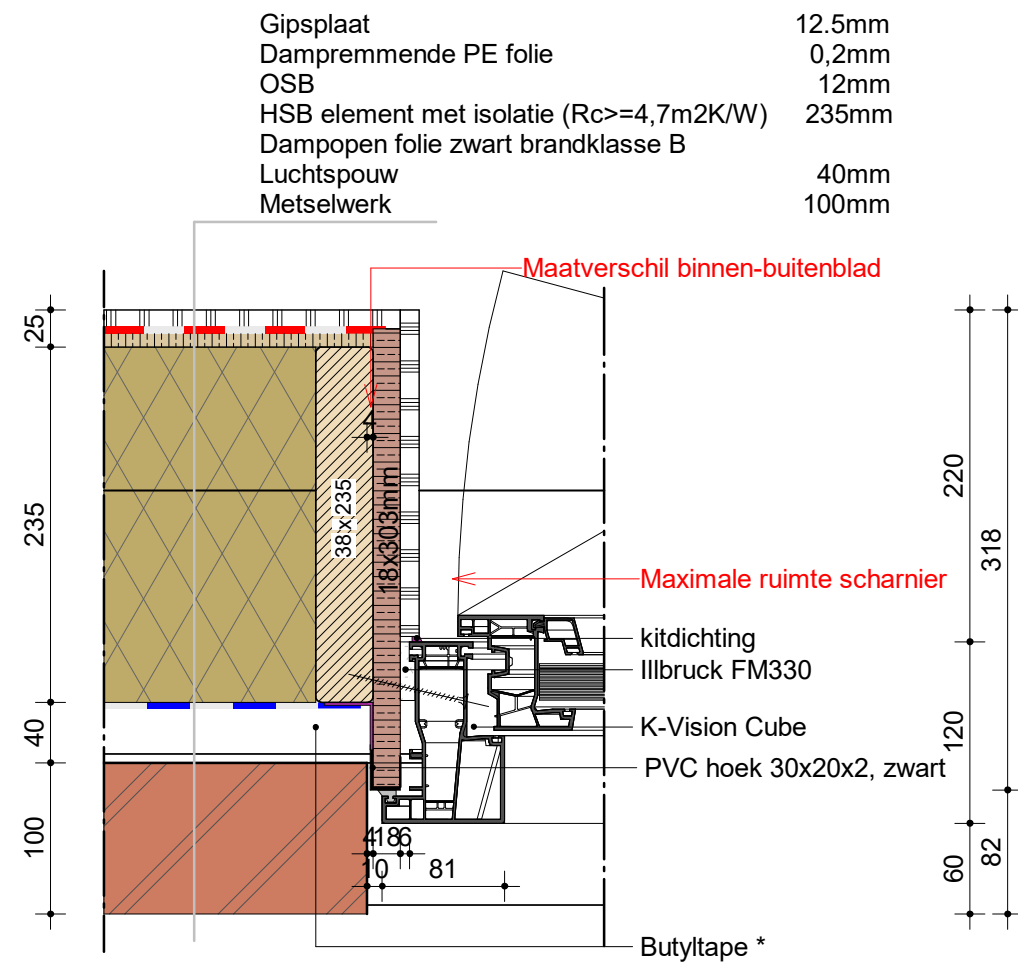
Afschot isolatie (16mm/m¹)
gemiddeld 150mm dik **

Balk zacht hout 70x245
Balk zacht hout 38x70

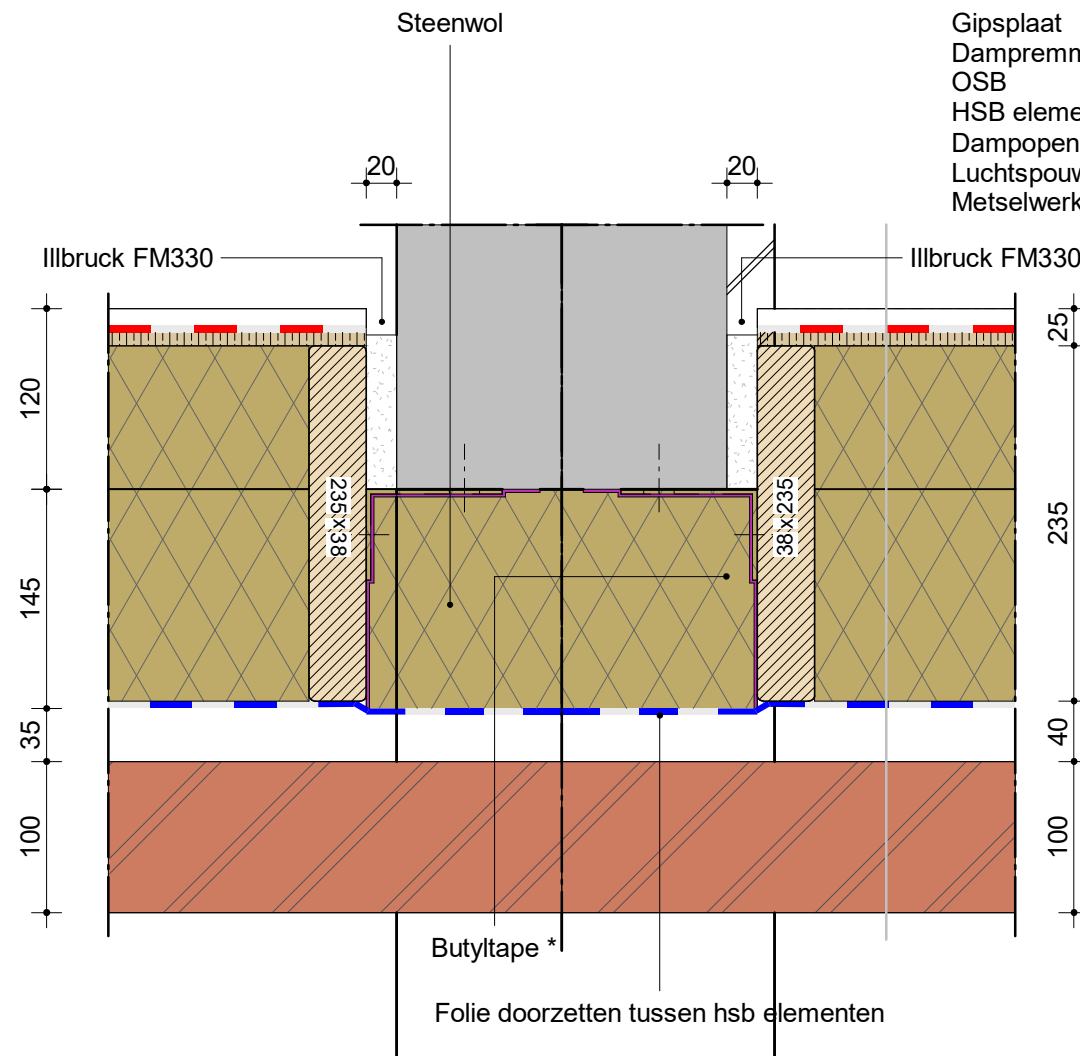
* Luchtdichting ivm Qv10 eis
** Zie afschotplan





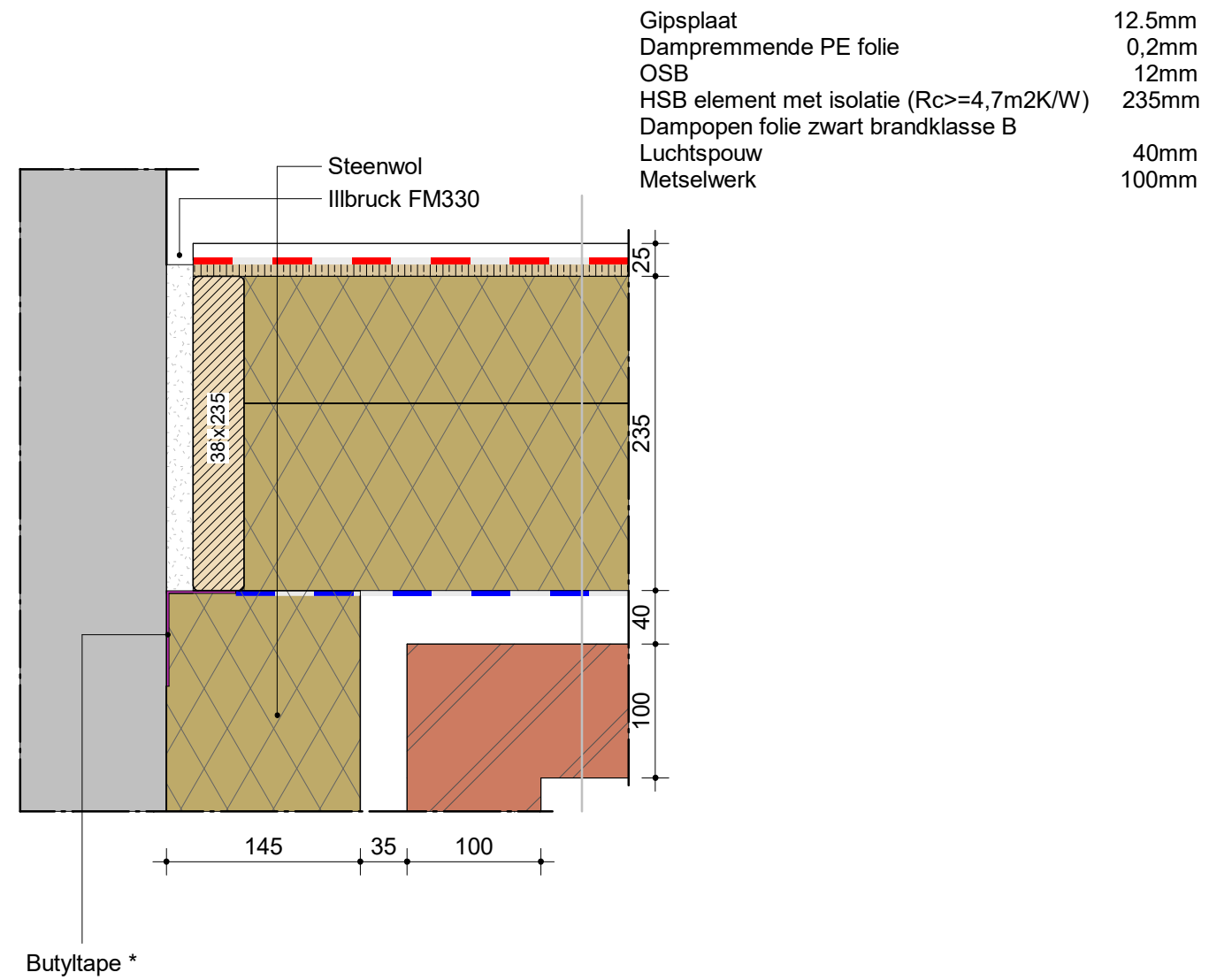


*Luchtdichting ivm Qv10 eis.

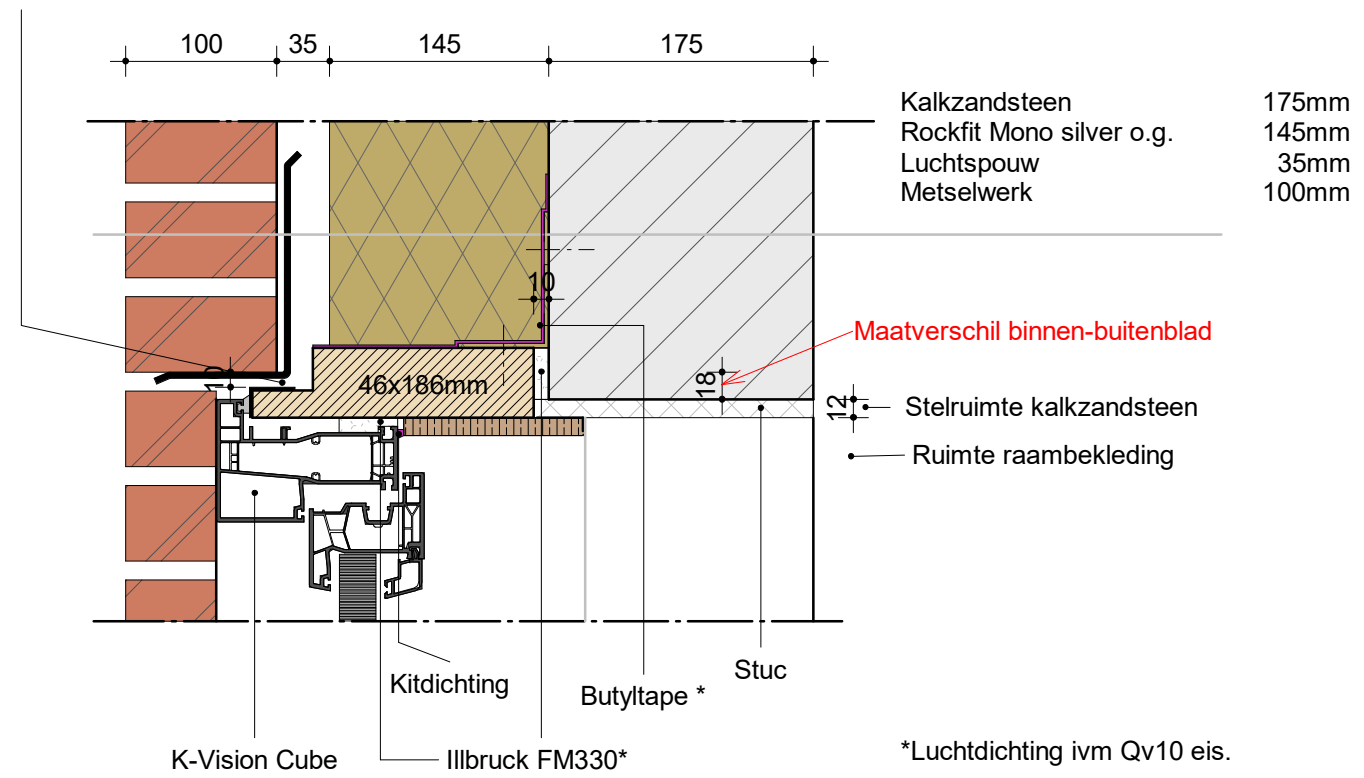


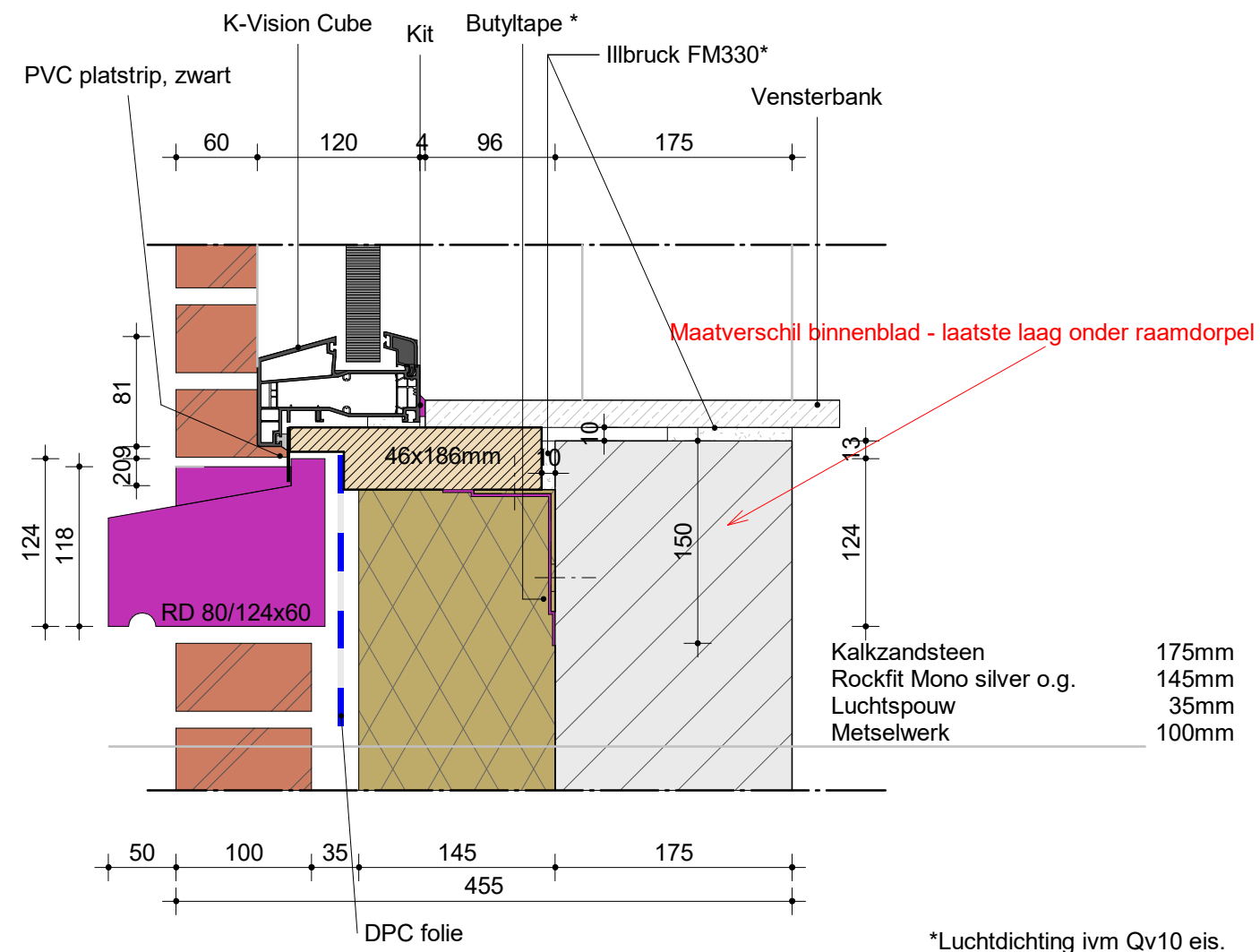
Gipsplaat	12.5mm
Dampremmende PE folie	0,2mm
OSB	12mm
HSB element met isolatie (Rc>=4,7m2K/W)	235mm
Dampopen folie zwart brandklasse B	
Luchtspouw	40mm
Metselwerk	100mm

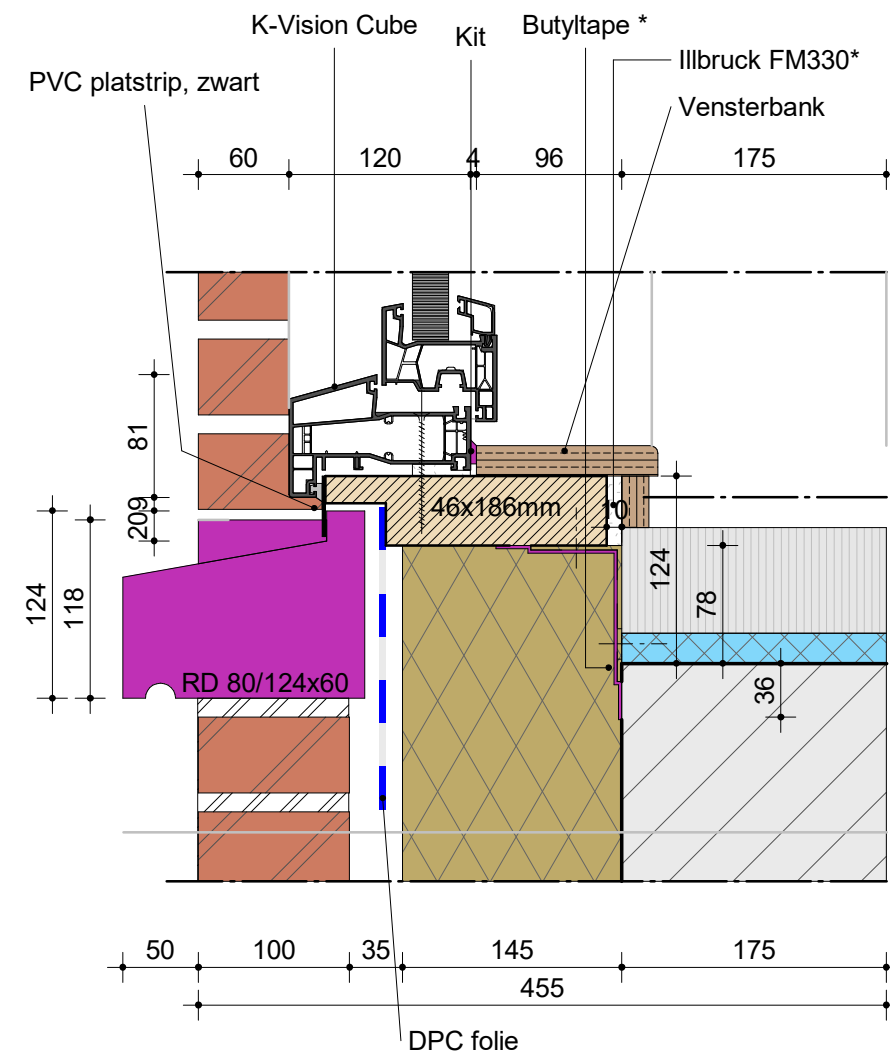
*Luchtdichting ivm Qv10 eis.



PVC hoek 30x20x2, zwart







Kalkzandsteen	175mm
Rockfit Mono silver o.g.	145mm
Luchtpouw	35mm
Metselwerk	100mm

*Luchtdichting ivm Qv10 eis.

